

INVACARE® MATRX®  
**SEATING SERIES**  
PRODUCT GUIDE



**Invacare® Matrx® Seating and Positioning** is an established global leader, committed to product innovation, high quality standards and superior product performance. As the world of seating evolves, the Invacare Matrx Seating Series continues to exceed customer expectations.

## Call to order

0800 468 222  
invacare.co.nz

1800 460 460  
invacare.com.au



# INVACARE® MATRX® TABLE OF CONTENTS

## Pediatric

### Cushions

PS Cushion	3
Kid*ab*ra Vi Cushion	3

### Backs

Mini Back	3
-----------	---

### Accessories

Elan Headrest	3
---------------	---

## Standard

### Cushions

Libra™	4
Libra™ Fit Kit	4
Vi	4
PS	4
Options	5
General Use	5

### Backs

Elite™TR	6
Elite™	6
Elite™ Deep	6
PB	6
PB Deep	6
Hardware	7
Options	7
Accessories	8/9
General Use	4

## Bariatric

### Cushions

Libra™ Heavy-Duty	10
Libra™ Fit Kit	10
Vi Heavy-Duty	10
Flovair™ Heavy-Duty Gentle/Max Contour	10
PS Heavy-Duty	10
Stabilite™ Heavy-Duty	10

### Backs

Elite™TR Heavy-Duty	11
Elite™ Heavy-Duty	11
Elite™ Deep Heavy-Duty	11
PB Heavy-Duty	11
PB Deep Heavy-Duty	11

## High Performance

MX2 Back	13
----------	----

## Accessories

Elan Headrest	9
Arm Pads/Straps/Lap Belts/Trays	13

## Quick Product Reference

Quick Product Reference	14/15
-------------------------	-------



## INVACARE® MATRX® FABRIC OPTIONS\*

*\*Note: Some options may be custom*



# INVACARE® MATRX® BACKS & CUSHIONS



## Mini Back

**Width:** 10", 11", 12", 13", 14"

**Height:** 7", 10", 12", 14"

**Weight Capacity:** 150 lb.

**Contour Depth:** 3"

**Fabric Options:** Kid\*ab\*ra Meshtex (shown); Blizzard Blue, Pink Lollipop and Black Startex

**Standard Hardware:** Mini-Set Mounting Hardware (Quick release latch for easy removal/ portability; Fits 1", 7/8" and 3/4" diameter canes; allows back angle/ depth adjustment with child seated in wheelchair)

**Options:** Mini Swing-away Laterals, Chest Harness Interface



Pink Lollipop Startex



Blizzard Blue Startex



Kid\*ab\*ra Meshtex

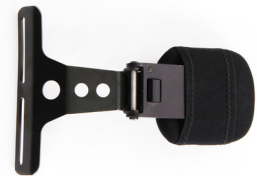


Black Startex

*\*Note: Some options may be custom*



Mini-Set Mounting Hardware



Mini Swing-away Laterals



Chest Harness Interface



## PS Pediatric Cushion

**Width:** 10" - 14"

**Depth:** \*10", 12", 14", 16"

\* available for 10" W cushions only

**Weight Capacity:** 150 lb.

**Fabric Options:** Kid\*ab\*ra Meshtex (shown); Blizzard Blue, Pink Lollipop and Black Startex

**Options:** Custom Modifications, Cushion Rigidizer, Pelvic Obliquity Kit



## Kid\*ab\*ra Vi Cushion

**Width:** 12", 14"

**Depth:** 12", 14"

**Weight Capacity:** 150 lb.

**Cover Options:** Kid\*ab\*ra Meshtex (shown), Black Meshtex

**Options:** Custom Modifications, Drop Base, Cushion Rigidizer, Pelvic Obliquity Kit



## Elan Headrest

Compact, lightweight and highly adjustable

**Adjustable Headrest Hardware:**

Six points of adjustment through pivot ball and multi-disk locking plates; includes tool-less adjustment levers

**Pads:** Pediatric pad options available, Standard Startex or Infection Control covers; aluminum plates can be formed to shape

**2015 AWARD**  
**HARDING**  
 INNOVATIVE  
 PRODUCT  
**SMC15**  
 SEATING, MOBILITY AND MORE

# INVACARE® MATRX® CUSHIONS



## Libra™ Cushion

**Width:** 14", 15", 16", 17", 18", 19", 20"

**Depth:** \*12", \*14", 16", 18", 20", 22"

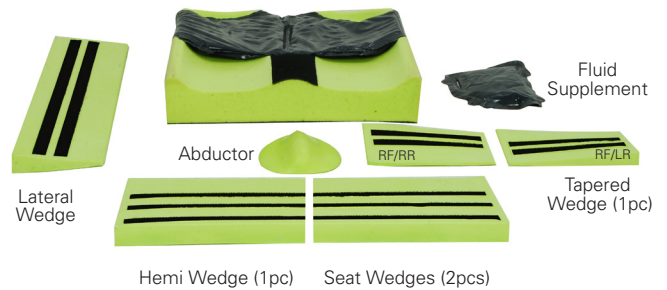
\* available for 14" W cushions only

**Weight Capacity:** 300 lb.

**Options:** Custom Modifications, Drop Base, Cushion Rigidizer, Pelvic Obliquity Kit

**Cover Options:** Startex™ (shown), Spacer Mesh, Infection Control (wipeable)

**Options:** Fit Kit Accessories Custom options available through Motion Concepts



## Fit Kit Accessories

Designed to enhance immersion, correct or accommodate orthopedic issues



## Vi Cushion

**Width:** 14", 16", 17", 18", 20"

**Depth:** \*15", 16", \*17", 18", 20"

\* available for 14" W cushions only-

**Weight Capacity:** 300 lb.

**Options:** Custom Modifications, Drop Base, Cushion Rigidizer, Pelvic Obliquity Kit

**Options:** Custom Modifications, Pelvic Obliquity Kit



## PS Cushion

**Width:** 16", 18", 20"

**Depth:** 16", 18", 20"

**Weight Capacity:** 300 lb.

**Options:** Custom Modifications, Cushion Rigidizer, Pelvic Obliquity Kit



# INVACARE® MATRX® OPTIONS



## Cushion & Cover Modifications - Custom Order

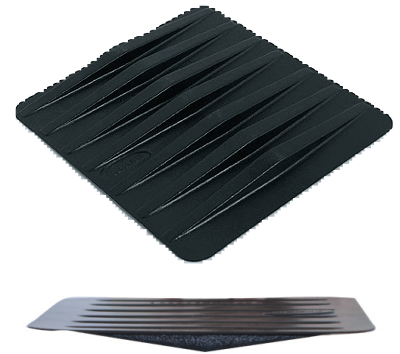
Custom modifications are available to accommodate a variety of orthopedic conditions. Standard modifications include seat width and depth reductions, as well as leg length discrepancies. (Additional lead time required).



## Pelvic Obliquity Kit (POK)

Designed to accommodate 0.5" or 1" obliquities. Can be readily modified and installed onto the following cushions:

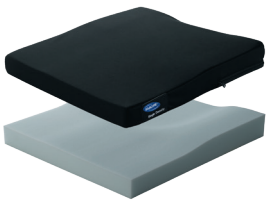
Vi and Kid\*ab\*ra Vi Cushions; PS Cushions; Flovair Cushions; Stabilite Cushions



## Cushion Rigidizers

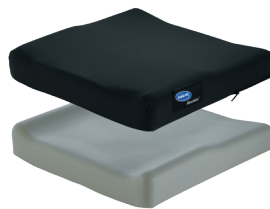
Lightweight plastic seat insert fits between seat rails for level support and eliminates hammock effect of sling seat upholstery. Securely fitted to bottom of foam cushion inside the cushion cover.

# INVACARE® GENERAL USE



## Invacare® Single Density Cushion - Custom Order

Standard Width: 10" - 24"  
Standard Depth: 7" - 20"  
Weight Capacity: 250 lb.



## Invacare® Absolute™ Cushion

Standard Width: 16", 18", 20"  
Standard Depth: 16", 18"  
Weight Capacity: 250 lb.

Standard

# INVACARE® MATRX® BACKS



## Elite™ TR Back

**Width:** 15", 16", 17", 18", 19", 20"

**Height:** 16", 18", 20"

**Weight Capacity:** 300 lb.

**Contour Depth:** 3"

Made with SuperSoft Foam: (Dual layer foam pad with 1" super-soft foam laminated to 1" firm HR foam)

**Standard Hardware:** Easy Set

**Hardware Options:** Extended Range Hardware, Split Hardware, Fixed Space Saver\*, Heavy-Duty Easy Set



## Elite™ Back

**Width:** 12" - 20"

**Height:** 10", 12", 14", 16", 18", 20"

**Weight Capacity:** 300 lb.

**Contour Depth:** 3"

**Standard Hardware:** Easy Set

**Hardware Options:** Extended Range Hardware, Split Hardware, Fixed Space Saver\*, Heavy-Duty Easy Set



## Elite™ Deep Back

**Width:** 14" - 20"

**Height:** 10", 12", 14", 16", 18", 20"

**Weight Capacity:** 300 lb.

**Contour Depth:** 6"

**Standard Hardware:** Easy Set

**Hardware Options:** Extended Range Hardware, Split Hardware, Fixed Space Saver\*, Heavy-Duty Easy Set



## PB Back

**Width:** 14", 16", 17", 18", 20"

**Height:** 12", 16", 20"

**Weight Capacity:** 300 lb.

**Contour Depth:** 5"

**Standard Hardware:** Easy Set

**Hardware Options:** Extended Range Hardware, Split Hardware, Fixed Space Saver\*, Heavy-Duty Easy Set



## PB Deep Back

**Width:** 14", 16", 17", 18", 20"

**Height:** 12", 16", 20"

**Weight Capacity:** 300 lb.

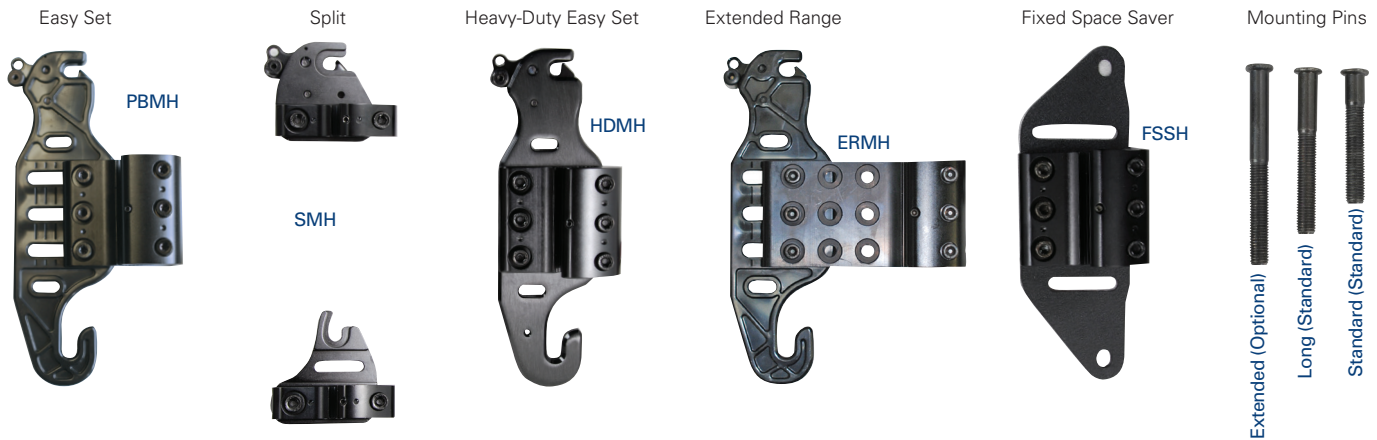
**Contour Depth:** 7"

**Standard Hardware:** Easy Set

**Hardware Options:** Extended Range Hardware, Split Hardware, Fixed Space Saver\*, Heavy-Duty Easy Set



# INVACARE® MATRX® HARDWARE



## Mounting Hardware Options

### Easy Set (PBMH)

300 lb. weight capacity. Quick release design for easy removal/portability; Allows back angle/depth adjustment with client seated in wheelchair; Compatible with all models of Elite & PB backs.

### Split (SMH)

500 lb. weight capacity. Allows clearance of back cane rigidizer bars or other obstacles.

### Heavy-Duty Easy Set (HDMH)

500 lb. weight capacity. Included with all Heavy-Duty Back models; Recommended for users with high tone or heavy intended use.

### Fixed Space Saver (FSSH)

500 lb. weight capacity. Recommended for power tilt/recline or tighter width applications. Permanent mount requires tool for removal.

### Mounting Pins

**Standard/Long Mounting Pins:** Included with PB and Elite Backs; allows PB Back to fit 1" narrower to 1" wider and Elite backs the same width or 1" wider wheelchairs.

**Optional Extended Mounting Pins (EMP):** Allow interface to wheelchairs up to 2" wider. 300 lb. weight capacity maximum.

# INVACARE® MATRX® OPTIONS



## Super-soft Foam Upgrade

Provides a 1" layer of super-soft foam laminated onto a 1" layer of firmer high resilience foam for increased immersion and added comfort. Available for the following models/sizes:

Invacare Matrix Elite & Elite Deep Backs

**Width:** 16", 18", 20"

**Height:** 16", 18", 20"

# INVACARE® MATRX® BACK ACCESSORIES



### Fixed Laterals

Designed for Invacare Matrix Elite & Elite Heavy-Duty Backs.

Mounting: Installs inside back shell;

Does not compromise depth/angle adjustment

**Options:** Standard/ Pediatric/Offset (Left or Right)

**Sizes:**

- Standard 7.5" L x 5" H
- Pediatric 5.5" L x 3" H
- Offset 7.5" L x 5" H



### Swing Away Laterals

Designed for Invacare Matrix Elite and Elite Heavy-Duty Backs. Mounting: Installs inside back shell; Does not compromise depth/angle adjustment. Lock/release latch allows pad to swing away for side transfers.

**Options:** Standard or Offset (Left or Right)

**Pad Sizes:**

- 4.25" L x 3.25" H
- 5.25" L x 3.5" H
- 5.75" L x 3.75" H
- 6.5" L x 4.25" H

## Pediatric



### Mini Swing-Away Laterals

Designed for the Invacare Matrix Mini Back. Installs inside back shell; Does not compromise depth/angle adjustment. Lock/release latch allows pad to swing away for side transfers.

**Options:** Standard only

**Pad Size:** 4.25" L x 3.25" H



### Chest Harness Interface for Mini Backs (HIMINI)

Height adjustable hardware allows attachment of OEM-compliant abdominal supports to the full range of Mini backs.



### Chest Harness Interface for Elite Backs (CHIEB)

Width, height and angle adjustable chest harness interface for precise orientation of shoulder straps.



### Chest Harness Interface for PB Backs (CHIPB)

Width adjustable chest harness interface for precise orientation of shoulder straps.



### Privacy Flaps (PFLAP)

Available for all models of Invacare Matrix PB, Elite shown), and the MX1 backs.

**Standard Sizes:** XS up to XXL, (fit back widths 13" up to 24")

Note: Flaps over 24" wide are available as special order.





# INVACARE® MATRX® ELAN® HEADREST



### Elan Headrest Hardware

Compact, lightweight and highly adjustable

**Elan Hardware:**

Six points of adjustment through pivot ball and multi-disk locking plates, available in standard -15" post or mini -11" post; includes tool-less adjustment levers

**Pads:** 6 Pad options available; aluminum plates can be formed to shape

**Pad Covers:**

Standard Startex or Infection Control covers available

 Available only from Motion Concepts



Co-molded Foam



Tool-less Adjustment levers



Ergonomic Knob

Accessories



### Standard Pad

**Pad Sizes:**

- 6" Pad: 6" x 3.5"
- 10" Pad: 10" x 5"
- 14" Pad: 14" x 5"



### Occipital Pad

**Pad Sizes:**

- 9" Pad: 9" x 7"
- 12" Pad: 12" x 8"



### 4 Point Pad

**Pad Size:** 11" x 10"

**2015 AWARD**  
**HARDING**  
 INNOVATIVE  
 PRODUCT  
**SMC15**  
 SEATING, MOBILITY AND MORE

INVACARE® MATRX®

# HEAVY-DUTY CUSHIONS



## Libra™ Heavy-Duty Cushion

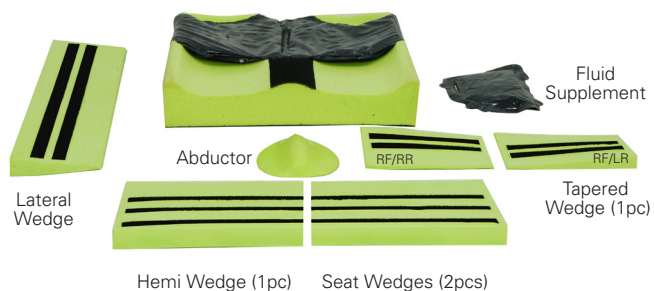
**Width:** 21", 22", 23", 24"

**Depth:** 18", 20", 22"

**Weight Capacity:** 500 lb.

**Cover Options:** Startex™ (shown), Spacer Mesh, Infection Control (wipeable)

**Options:** Fit Kit Accessories Custom options available through Motion Concepts



## Fit Kit Accessories

Designed to enhance immersion, correct or accommodate orthopedic issues



## Vi Heavy-Duty Cushion

**Width:** 21" - 30"

**Depth:** 21" - 26"

**Weight Capacity:** 600 lb.

**Options:** Custom Modifications, Pelvic Obliquity Kit



## PS Heavy-Duty

**Width:** 21" - 30"

**Depth:** 18" - 30"

**Weight Capacity:** 600 lb.

**Options:** Custom Modifications, Pelvic Obliquity Kit, Cushion Rigidizer



# INVACARE® MATRX® HEAVY-DUTY BACKS



## Elite™ TR Heavy-Duty Back

**Width:** 21" - 24"

**Height:** 20"

**Weight Capacity:** 500 lb.

**Contour Depth:** 3"

Made with SuperSoft Foam: (Dual density, 1" firm + 1" soft HR foam combination)

**Standard Hardware:** Heavy-Duty Easy Set

**Hardware Options:** Fixed Space Saver\*



Heavy-Duty Easy Set Hardware



Super Soft Foam



## Elite™ Heavy-Duty Back

**Width:** 21" - 24"

**Height:** 16", 20"

**Weight Capacity:** 500 lb.

Extra Wide PB Heavy-Duty Backs are available up to 30" W x 16" or 20" H

**Contour Depth:** 5"

**Standard Hardware:** Heavy-Duty Easy Set

**Hardware Options:** Fixed Space Saver\*



## Elite™ Deep Heavy-Duty Back

**Width:** 21" - 24"

**Height:** 16", 18", 20"

**Weight Capacity:** 500 lb.

**Contour Depth:** 6"

**Standard Hardware:** Heavy-Duty Easy Set

**Hardware Options:** Fixed Space Saver\*



## PB Heavy-Duty Back

**Width:** 20", 22", 24"

**Height:** 16", 20"

**Weight Capacity:** 500 lb.

Extra Wide PB Heavy-Duty Backs are available up to 30" W x 16" or 20" H

**Contour Depth:** 5"

**Standard Hardware:** Heavy-Duty Easy Set

**Hardware Options:** Fixed Space Saver\*



## PB Deep Heavy-Duty Back

**Width:** 20", 22", 24"

**Height:** 16", 20"

**Weight Capacity:** 500 lb.

Extra Wide PB Deep Heavy-Duty Backs are available up to 30" W x 16" or 20" H

**Contour Depth:** 7"

**Standard Hardware:** Heavy-Duty Easy Set

**Hardware Options:** Fixed Space Saver\*

\*Note: This back can be installed on the Invacare® Formula™ CG Tilt/Recline, and Motion Concepts TRx Power Positioning Systems using FSSH

2017 AWARD

**HARDING**  
INNOVATIVE  
PRODUCT



# INVACARE® MATRX® MX2 BACK



## Matrx MX2 Back

MX2 Back is designed for active users who demand the best. Carbon fiber specially engineered to provide unmatched stability for peak performance. Contoured to provide hip/trunk stability and enhance upper extremity mobility and function. Very light weight and aesthetically appealing.

**Width:** 14", 15", 16", 17", 18"

**Height:** 6", 9", 12", 16"

**Weight Capacity:** 250 lb.

**Contour Depth:** 3"

**Hardware Options:** Fixed Mount & Quick Release



## Back Shell

Solid Carbon fiber construction designed to provide optimal flex and suspension. Shaped for perfect fit and maximum stability. Designed with cutouts for breathability and slots for easy height adjustment.



Fixed Mount

Quick Release



## Hardware Options

Angle, height, depth, width, rotation adjustable for precise orientation.

**Fixed Mount** – Lightweight, carbon fiber construction, maximum performance for rigid chairs

**Quick Release** – Easy removal for portability



## Privacy Flaps (PFLAP)

Available for all MX2 back sizes

# INVACARE® MATRX® ACCESSORIES



## Air Mesh Calf Straps

Available in 4 sizes:  
 3.5" H and fits chairs 15" - 18" W  
 3.5" H and fits chairs 18" - 22" W  
 9" H and fits chairs 15" - 18" W  
 9" H and fits chairs 18" - 22" W



## Padded Lap Belts

Available in 2 and 4 Point; Central pull, push release bottom; fits hip widths 13" - 19" W



## Ergonomic Arm Trough

Molded, ergonomic shape fits the natural arm curve; provides users flexibility of various arm positions Available for left or right side and is 13" x 4.5"; hand pad is optional add-on and is also available for left or right side and is 5" x 4.5"



## Modular Arm Pads

Durable composite frame features 3 slots for infinite fore and aft adjustability as well as offset mounting.

Available for left or right side and in 2 sizes:

- Full length: 14" x 4"
- Desk length: 10" x 4"

Available in 2 interchangeable foam inserts:  
 Visco Foam/Startex and Integral Foam



## Gel Arm Pads

Available for left or right side and in 3 sizes:

- Narrow: 12" x 2"
- Wide: 12" x 3"
- Long: 14" x 3.5"



## Multi-Axis Armrest Mount

Allows infinite adjustability of angle and rotation of arm pad or Multi-position arm pads or Arm Trough.



## Invacare® Drop Base

Provides stable support base for the cushion.  
 Three sizes for wheelchairs from 14" - 22" W



Cushions	Absolute	Single Density	PS Pediatric	PS Cushion	PS Heavy-Duty	Kid*ab*ra-Vi	Vi	Vi Heavy-Duty
	STANDARD	STANDARD	PEDIATRIC	STANDARD	BARIATRIC	PEDIATRIC	STANDARD	BARIATRIC
<b>Model</b>	ECwd	SDwd	PSwwdd	PSwwdd	PSwwdd	KAwwdd-Vi	MAwwdd-Vi	MAwwdd-Vi
<b>Width</b>	16", 18", 20"	10" - 24"	10" - 14"	16", 18", 20"	21" - 30"	12", 14"	14", 16", 18", 20"	21" - 30"
<b>Depth</b>	16", 18"	7" - 20"	10", 12", 14", 16"	16", 18", 20"	18" - 30"	12", 14"	16", 18", 20"	18" - 30"
<b>Weight Capacity</b>	250 lb.	250 lb.	150 lb.	300 lb.	600 lb	150 lb.	300 lb.	600 lb
<b>Cover Options</b>			Kid*a*bra, Pink Lollipop, Blizzard Blue			Meshtex		

Backs	Mini	Elite	Elite Heavy-Duty	Elite TR	Elite TR Heavy-Duty	Elite Deep	Elite Deep Heavy-Duty	PB
	PEDIATRIC	STANDARD	BARIATRIC	STANDARD	BARIATRIC	STANDARD	BARIATRIC	STANDARD
<b>Model</b>	MINIwwhh	PBEwwhh	PBEwwhh-HD	PBEwwhh-TR	PBEwwhh-TRHD	EDBwwhh	EDBwwhh-HD	MPBwwhh
<b>Width</b>	10" - 14"	12" - 20"	21" - 24" ; 25" - 30" (Extra Wide)	15" - 20"	21" - 24"	14" - 20"	21" - 24"	14", 16", 17", 18", 20"
<b>Height</b>	7", 10", 12", 14"	10", 12", 14" 16", 18", 20"	16", 20"	16", 18", 20"	20"	10", 12", 14" 16", 18", 20"	16", 18", 20"	12", 16", 20"
<b>Contour Depth</b>	3"	3"	3"	3"	3"	6"	6"	5"
<b>Weight Capacity</b>	150 lb.	300 lb.	500 lb.	300 lb.	500 lb.	300 lb.	500 lb.	300 lb.
<b>Std. Cover</b>	Kid*a*bra	Meshtex	Meshtex	Meshtex	Meshtex	Meshtex	Meshtex	Meshtex
<b>Fits onto Back Canes:</b>	Fits up to 1" wider	Fits up to 1" wider	Fits up to 1" wider	Fits up to 1" wider	Fits up to 1" wider	Fits up to 1" wider	Fits up to 1" wider	Fits 1" narrower up to 1" wider

*\*This information is not intended to be, nor should it be considered billing or legal advice. Providers are responsible for determining the appropriate billing codes when submitting claims to the Medicare Program and should consult an attorney or other advisor to discuss specific situations in further detail.*

<b>Libra</b>	<b>Libra Heavy-Duty</b>
<b>STANDARD</b>	<b>BARIATRIC</b>
LCwwdd	LCwwdd
14" - 20"	21", 22", 23", 24"
12", 14", 16", 18", 20", 22"	18", 20", 22"
300 lb.	500 lb.
Spacetex (-SP), Infection Control (-IC)**	Spacetex (-SP), Infection Control (-IC)**

<b>PB Heavy-Duty</b>	<b>PB Deep</b>	<b>PB Deep Heavy-Duty</b>	<b>MX2 Fixed</b>	<b>MX2 Quick Release</b>
<b>BARIATRIC</b>	<b>STANDARD</b>	<b>BARIATRIC</b>	<b>STANDARD</b>	<b>STANDARD</b>
HDBwwhh	PBDwwhh	DHDwwhh	IMX2wwhh-CFH	IMX2wwhh-QRH
20" - 30" †	14", 16", 17", 18", 20"	20" - 30" †	14" - 18"	14" - 18"
16", 20"	12", 16", 20"	16", 20"	6", 9", 12", 16"	6", 9", 12", 16"
5"	7"	7"	3"	3"
500 lb.	300 lb.	500 lb.	250 lb.	250 lb.
Meshtex	Meshtex	Meshtex	Spacetex / Onyx Vinyl	Spacetex / Onyx Vinyl
Fits up to 1" wider	Fits 1" narrower up to 1" wider	Fits up to 1" wider	Fits 1" narrower up to 1" wider	Fits 1" narrower up to 1" wider

For more information on Invacare Matrix  
Seating Series Products visit  
**[www.invacare.co.nz](http://www.invacare.co.nz) or**  
**[www.invacare.com.au](http://www.invacare.com.au)**

**Invacare New Zealand**

4 Westfield Place  
PO Box 62 124  
Mt Wellington, Auckland  
New Zealand  
Freephone: 0800 INVACARE  
(0800 468 222)  
Fax: 0508 807 788  
Email: [sales@invacare.co.nz](mailto:sales@invacare.co.nz)  
Web: [www.invacare.co.nz](http://www.invacare.co.nz)

**Australia Pty Ltd**

1 Lenton Place  
PO Box 5002 North Rocks  
NSW 2151  
Australia  
Freephone: 1800 460 460  
Fax: 02 8839 5353  
Email: [sales@invacare.com.au](mailto:sales@invacare.com.au)  
Web: [www.invacare.com.au](http://www.invacare.com.au)

**Asia Ltd**

1 Lenton Place  
PO Box 5002 North Rocks  
NSW 2151  
Australia  
Phone: +61 2 8839 5330  
Fax: +61 2 8839 5331  
Email: [exportsales@invacare.com.au](mailto:exportsales@invacare.com.au)  
Web: [www.invacare.com](http://www.invacare.com)

**Thailand Ltd**

No. 399 Interchange 21,  
33rd Floor, Sukhumvit Road,  
North Klongtoey Sub-district,  
Wattana District, Bangkok Metropolis  
Phone: +66 0 2108 8555  
Web: [www.invacare.com](http://www.invacare.com)

© 2017

Invacare Corporation.  
All rights reserved. Trademarks are  
identified by the symbols ™ and ®. All  
trademarks are owned by or licensed to  
Invacare Corporation unless otherwise  
noted. Matrix is a registered trademark  
of Motion Concepts. Specifications are  
subject to change without notification.  
Form No. 15-219  
Rev. 10/17  
171013

