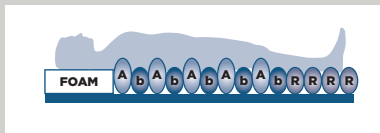


Healthcare  
furniture,  
enhancing  
lives.

# Caremed Alrick.



## Total FlowHybrid



CM-CMBR Total Flow Hybrid Mattress With Evacuation – the high/very high risk Total Flow Hybrid is the world's first 4 in 1 hybrid mattress. The sophisticated mattress design provides effective comfort, care and pressure redistribution and relief for patients in hospital, nursing and care home environments.

The Total Flow Hybrid can be used just as a high specification foam pressure redistribution mattress, also doubling up with balanced-air self-adjusting foam-filled air cells, and the option to add a choice of pumps to provide alternating pressure, and a built in Evacuation System of handles and straps.

The air cells are contained within a high density foam perimeter which creates a smooth transition from the side rail to the air cell. No requirement to remove patient from bed to change from foam system to alternating air system.

Total Flow Hybrid also boasts a unique adaptable heel zone with gel-foam pads, individually removable to reduce to zero pressure on the heel as required for unrivalled pressure redistribution and improved circulation.

## TECHNICAL SPECIFICATION

### Mattress Specification

- > Mattress dimensions:  
Single  
197 x 90 x 15 cm  
King Single  
197 x 105 x 15cm
- > Max load capacity:  
250Kgs
- > Min load capacity: 30Kgs

### Cover Specification

- > Multi-stretch and vapour permeable PU
- > Water resistant and machine washable
- > Antimicrobial with white underside
- > BS7177: Crib 5
- > Fire evacuation strap system

## PRODUCT CODES

Total Flow-Hybrid mattress only

Single  
**CM-CMBR-M-90**  
King Single  
**CM-CMBR-M-107**

Total Flow-Hybrid mattress  
c/w Total Flow-Hybrid Pump  
**CM-CMBR-PMP**

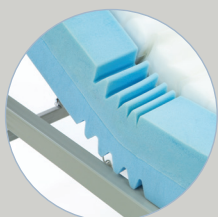
Total Flow-Hybrid Pump



Pump Spec

- > Operating System: Total Air Technology
- > Pump Dimensions:  
34.5 x 24 x 12.5 cm  
(13.5 x 9.4 x 4.9")
- > Pump Weight: 2.8kg (6.1lb)
- > Cycle Time: 10, 15, 20, 25 minutes
- > Memory function
- > Power Input:  
AC220-240V, 50-60Hz
- > Power Consumption: 7W
- > Fitted with hanging brackets
- > Alternate/Static modes
- > Low pressure, Power failure & Alternate failure, visual & audible alarm
- > Max firm
- > Panel lock

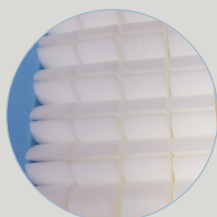
## KEY FEATURES AND BENEFITS



Profiling side sections  
- 8 points



Self adjusting foam  
filled air cells



Castellated head section  
for unique comfort



Adaptable heel zone with  
removable gel-foam pads



Evacuation straps and handles



## CONTROL PANEL

Auto pressure sensing for consistent distribution of air

Visual and audible warning of air loss, power failure and alternate failure

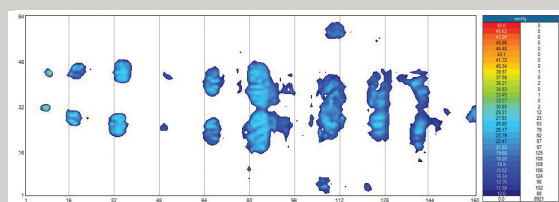
Control panel lock to prevent unauthorised or accidental tampering (hold for 2 sec)

Silent pump operation to avoid disturbance

Multiple cycle time control for efficiency

Static/alternating modes

Weight setting control knob



### Australia

VIC  
2/77 Ricky Way  
Epping  
VIC 3076

NSW  
104 Loughnan Street  
Lake Cargelligo  
NSW 2672

T 1800 282 001  
sales@caremed.healthcare  
www.caremed.healthcare

### United Kingdom

Port Stanley House  
Falkland Close  
Coventry, CV4 8AU

T 01926 889677  
updates@caremed.healthcare  
www.caremed.healthcare

E & O.E.