



# ProCair Trio

Delivering enhanced dynamic therapy and increased stability with the comfort of 1 in 3 alternation.

The ProCair Trio offers superior safety features including a fully sealed base, and is especially suitable for hospital and aged care clients with a high to very high risk of pressure injuries.

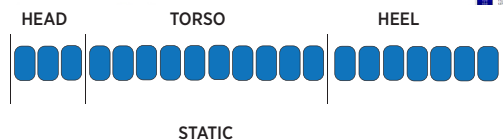
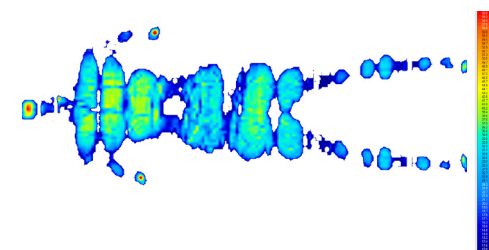
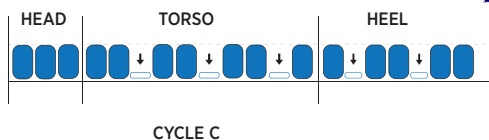
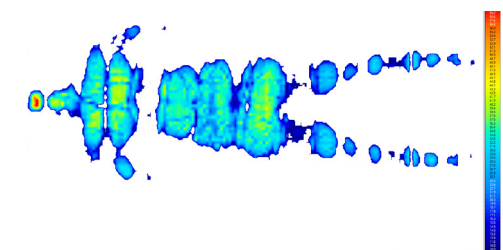
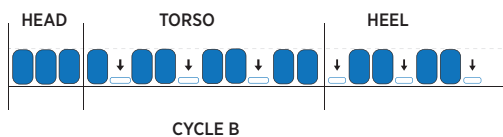
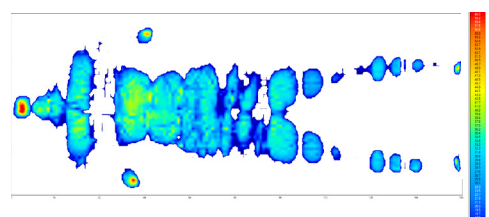
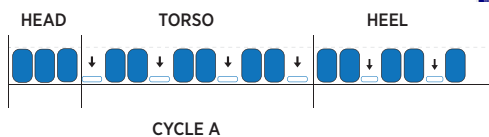
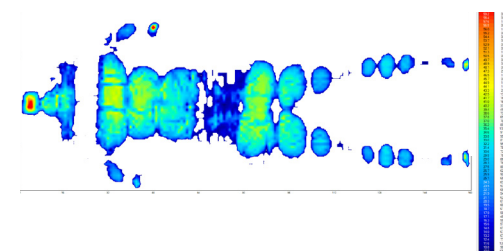


1-in-3



## ProCair Trio

AcuteCair



### 1-in-3 Alternation

- Supports more of the patient's body during active therapy
- Redistributes the pressure and delivers greater comfort

### Comfort Control

- 3 Comfort levels to suit individual need

### Cell in cell technology

- Lower air cells remain inflated during therapy which maintains support of patient, provides superior infection control, and prevents patients from bottoming out

# ProCair Trio

## Features

### Multi-stretch water resistant, vapour permeable cover

To protect against shear and friction and reduce moisture against skin

### Bed exit alarm

Audible alarm can be activated to manage falls risk

### TPU Cells

Automatically adjust to the ambient temperature of the room

### Heel Zone

- Individually detachable heel zone cells to allow complete off-loading of the vulnerable calcaneus
- Tapered heel sloped design with narrower cells

### AutoCair

Automatic weight sensing ensures correct weight setting for effective therapy

### Rapid CPR

Release in case of emergency

### Fully sealed base

For maximum infection control

### Backup battery

Allows for continuous active therapy up to 3 hours in the event of a power failure and during patient transport

### 24 Hours transport mode



### Automatic fowler boost

Protects patient from bottoming out when positioned with the head raised between 15-45 degrees



### Cable management system

Ensure cords are neatly secured along either side of the mattress to reduce risk of trips and potential damage to power cords



### Side Bolsters

Provide stability for the patient during sit-to-stand transfers and bed mobility

# ProCair Trio

## Specifications

	SINGLE	KING SINGLE
<b>CODE</b>	APMPC-R05	APMPC-R05K
<b>CAPACITY (SAFE WORKING LOAD)</b>	40-250kg	40-250kg
<b>SYSTEM ALTERNATION</b>	1 in 3	1 in 3
<b>WARRANTY</b>	3 Year	3 Year
<b>PRESSURE INJURY RISK</b>	High to Very High	High to Very High
<b>COMPLIANCE</b>	IEC60601-1, IEC60601-1-2 and IEC60601-1-11	IEC60601-1, IEC60601-1-2 and IEC60601-1-11
<b>ARTG</b>	289458	289458
<b>MATTRESS DIMENSIONS (L x W x H)</b>	2000 x 880 x 200mm	2000 x 1050 x 200mm
<b>MATTRESS WEIGHT</b>	12.5kg	14kg

Refer to the Technical Data Sheet for detailed specifications.

## Accessory



### Fast Inflation/deflation pump

Setup or deflate mattress in under 2 minutes

