

# SIRIUS ADJUSTABLE BED

## *Style* meets FUNCTIONALITY

PREMIUM QUALITY AUSTRALIAN DESIGN

2024 GOOD DESIGN AUSTRALIA AWARD WINNER

SIRIUS OFFERS THE ULTIMATE IN CLIENT SAFETY  
AND COMFORT WITHOUT COMPROMISING ON STYLE

ELEVATION RANGE 200MM - 750MM REDUCING  
RISK TO CLIENTS & ALLOWING CARE GIVERS  
SAFE TRANSFERS & EASY ACCESS TO PROVIDE  
TREATMENT

7 PRESENT POSITIONS & OVER 50 POSITION  
COMBINATIONS

SIRIUS IS REGISTERED ON THE AUSTRALIAN  
REGISTER OF THERAPEUTIC GOODS (ARTG) AS  
A CLASS I MEDICAL DEVICE (ID 416181)







## WHY SIRIUS?

Well-engineered machinery and beautiful composition, SleepTite's award winning SIRIUS adjustable bed weaves clean aesthetics together with seamless clinical functionalities. SIRIUS was designed in Australia following extensive consultation with occupational therapists, nurses, carers, aged care facility managers and end-users who desired a bed with both floorline capabilities (200mm) and an advanced height function (750mm) that didn't compromise on style. SIRIUS was designed to bring respect and dignity to the lives of those in need of assistive technology in the bedroom without compromising safety for the user or those who care for them. SIRIUS is suitable for any bedroom where assisted living solutions are required, whether that be in a home care environment, residential aged care facility, rehabilitation facility or retirement home.

## KEY FEATURES



Commercial grade stain resistant fabric



Underbed light



Siderails & Bed Stick with return



Matching companion bed available

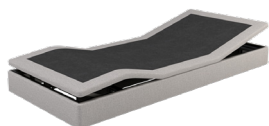


7 preset positions & 50 combinations

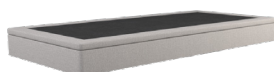


Hundreds of finishes - fabric, PU & wood available for bulk orders

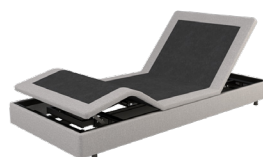
## 7 PRESET POSITIONS



Zero Gravity



Floorline Position (<200mm)



Backrest & Kneebreak in Low Position



Chair Position



Reverse Trendelenburg



Standard & High Position (>750mm)



Backrest & Kneebreak in High Position

SIRIUS offers 7 preset positions (including 3 that can be customised to the user), 50 combinations, underbed lighting and a suite of optional additions such as bed stick with return, side rails and an optional matching companion bed.



## SAFETY FEATURES

SIRIUS' market leading floorline and height elevation range offers the ultimate in user safety and comfort while providing the safest working environment for care givers.

With it's impressive low height of 200mm at the top of the bed surface, injury can be significantly reduced or avoided in the event of a fall from bed, therefore limiting the need for side-rails and reducing user anxiety.

Studies have shown the benefits of sleeping low and eliminating side rails to user safety, welfare and comfort, in particular by lowering fall rates, fall injury severity and anxiety.

The ability to raise the bed to 750mm (900mm when paired with a 150mm mattress) will reduce the strain of manual handling users, allowing care givers and medical staff easy access to provide treatment and enabling safe transfers.

With over 50 combinations and the ability to raise or lower the surface height to any position within the elevation range, carers and medical staff can ensure SIRIUS will sit at a safe height for whoever is sleeping on it

Mobility challenges, dementia, vertigo, memory loss and vision impairment are common ailments and contributors to falls risk. The wide surface of the SIRIUS King Single bed reduces the risk of falling out of bed meaning users can feel more comfortable and carers will have greater piece of mind for their safety.

The ability to move SIRIUS into a low height and flat surface facilitates the administration of CPR in the event of an emergency.

Alongside the extensive height range, optional extras can be purchased and retrofit at any time, ensuring SIRIUS will remain a suitable option for users regardless of their care requirements.

Sleeptite successfully developed a revolutionary Hidden Castors System which allows carers to easily move the position of the bed if required. However, the casters can only be engaged via a separate button on the remote ensuring SIRIUS won't be lowered onto the casters when the carer or user is putting the bed into low position.

Simple hand controls on the remote ensures users can easily understand bed functionality

SIRIUS is registered on the Australian Register of Therapeutic Goods (ARTG) as a Class I Medical Device (ID 416181) and was built to all relevant ISO safety standards







## OPTIONAL EXTRAS



Matching headboard



Matching footboard



Companion Bed



Side Rails



Bed Stick with return



Standard colour: Onyx



Standard colour: Stone

Optional extras can be purchased and retrofit at any time, ensuring SIRIUS will remain a suitable option for users regardless of their care requirements.

## KEY SPECIFICATIONS

### Australian standard bed sizes:

|               |                 |
|---------------|-----------------|
| Long Single   | 920mm x 2030mm  |
| King Single   | 1070mm x 2030mm |
| Split King    | 1840mm x 2030mm |
| Companion Bed | 920mm x 2030mm  |

### Technical Specifications

|                             |  |
|-----------------------------|--|
| Client Surface Long Single  | 920mm x 2030mm                           |
| Client Surface King Single  | 1070mm x 2030mm                          |
| Client Surface Height Range | 200mm - 750mm                            |
| Overall Length              | 2030mm                                   |
| Overall Width               | 920mm (Long Single) 1070mm (King Single) |
| Safe Working Load           | 200kg                                    |
| Underbed Clearance Variable | 100mm - 150mm                            |
| Knee Bend Range             | 0° to 38°                                |
| Backrest Range              | 0° to 70°                                |
| Product Weight Long Single  | 96kg                                     |
| Product Weight King Single  | 106kg                                    |



### Warranty:

Frame - 10 years

Motor & Electronics - 3 years